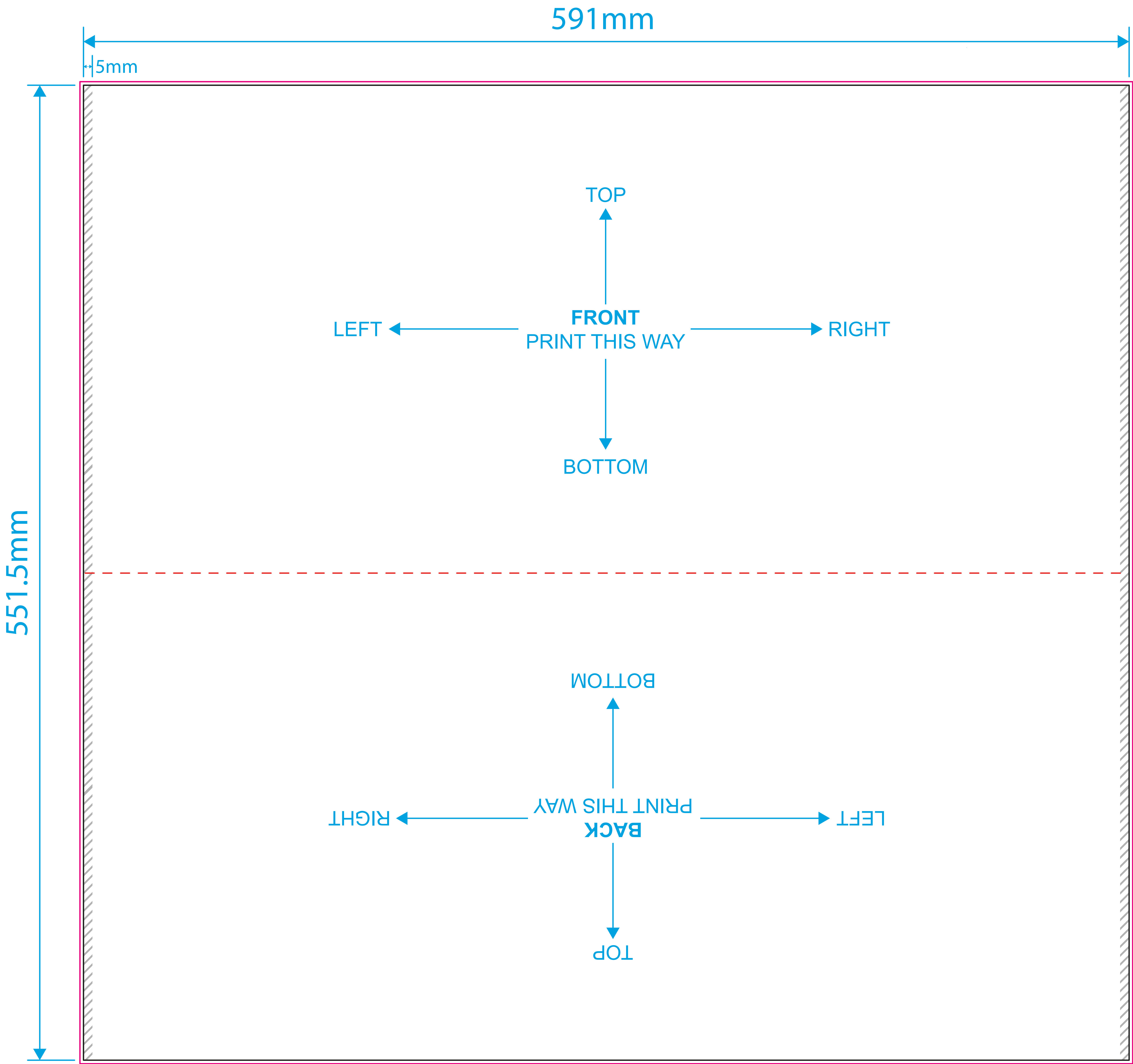


# Freelight Plus

## Artwork Template

Artwork guidelines - PLEASE READ
• Must be supplied in <b>CMYK</b> .
• <b>Embed</b> all images.
• All fonts must be converted to <b>outlines</b> .
• Resolution must be <b>300dpi</b> .
• Supply artwork as high resolution <b>PDF</b> or <b>Illustrator</b> file.
• Specify <b>Pantone</b> colours for <b>screen print</b> .
• Convert all spot colours to process <b>CMYK</b> for <b>digital print</b> . (Pantone matching cannot be guaranteed)
• Set artwork at <b>100%</b> scale.



### Template guidelines - PLEASE READ

- The **Black** keyline = Finished cut size of the product before assembly.
- The **Pink** keyline = Your background must extend to this line.
- - - The **Red** keyline = Midpoint of graphic insert.
- ▨ The **Grey** hatched area = This area will not be displayed when insert is placed into Freelight unit